

Arbor Dental

Oral Cancer Awareness

One person dies every hour from oral cancer in the United States.

This statistic speaks magnitudes to us in the dental health profession!

In our continuing efforts to enhance patient care, Arbor Dental is proud to announce the inclusion of the ViziLite Plus exam as an important part of our annual comprehensive oral cancer screening program.

Late detection of oral cancer is the primary reason the mortality rates are so dismal. By the time a clinician can visibly detect oral cancer, it's all ready in stage 4.

With ViziLite, we can detect abnormal cells in early stage and treat the cancer before it spreads.

Oral Cancer Risk Profile:

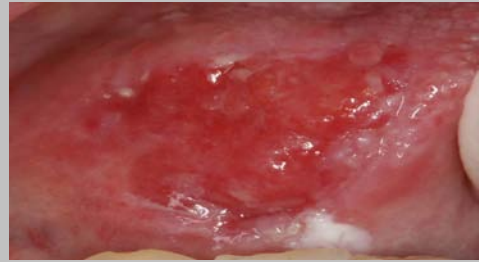
Increased risk

- Patients age 40 and older (95% of all cases)
- 18-39 years of age combined with the following:
 - Tobacco use
 - Chronic alcohol consumption
 - Oral HPV infection

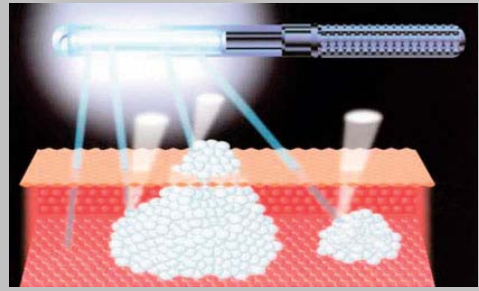
Highest risk

- Patients age 65 and older with lifestyle risk factors
- Patients with history of oral cancer

(25% of oral cancers occur in people who don't smoke and have no other risk factors.)



Stage 4 oral cancer lesion



Detection of abnormal cells

<http://www.zila.com/5/>
Click above to read more!

Arbor Dental

Phone: 734.975.0500

Fax: 734.975.9350

2301 Platt Rd

Ann Arbor MI 48104

WWW.ARBOR-DENTAL.COM